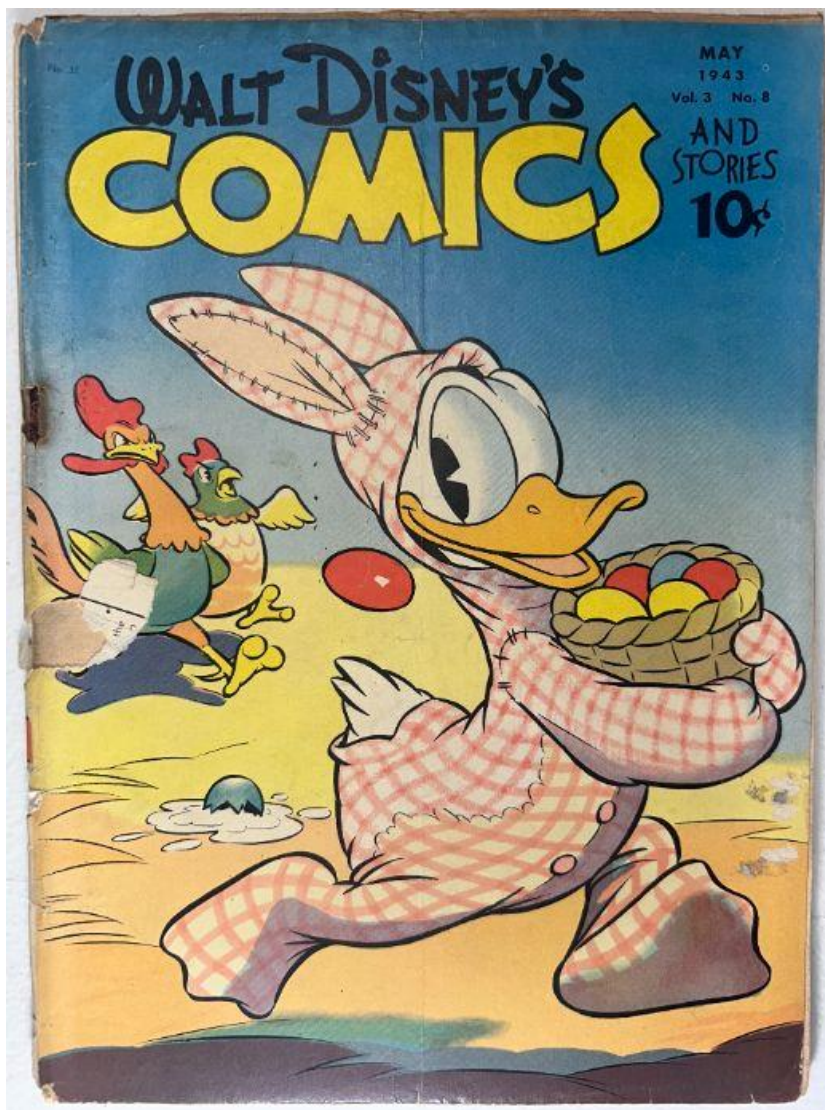


■ Walt Disney's Comics and Stories – Vol. 3 No. 8 (May 1943)

Front Cover — Observations (IMG_1292)

Photo Condition & Quality

Clear, high-resolution image showing the full cover with even lighting and accurate color representation.



Scene & Composition

- Donald Duck appears in the foreground wearing a pink checkered outfit and bonnet, carrying a basket of eggs.
- A rooster and hen chase closely behind Donald across a farmyard setting.
- Background consists of a blue sky transitioning into a pale yellow ground.
- Masthead at top reads *Walt Disney's Comics and Stories* with issue text **May 1943 – Vol. 3 No. 8 – 10¢**.

Physical Condition Findings

- Pronounced vertical crease running through the center of the cover.
- Multiple additional creases across the sky and ground areas.
- Heavy spine wear with paper loss and splitting near both staples.
- Bottom edge shows chips and abrasion.
- Corner rounding on all corners, especially lower-left.
- Moderate surface scuffing and soiling over light background areas.

Color & Printing Quality

- Blues, yellows, and reds remain strong though dulled by wear.
- Some fading and mottling in lighter background fields.
- Black outlines remain clear and legible.

Paper & Structural Notes

- Moderate oxidation along edges.
- Cover remains attached, but spine structure is significantly weakened.

Overall Impression

Bright and expressive cover art with heavy handling wear, pronounced creasing, and severe spine stress.


Back Cover — Observations (IMG_1293)

Photo Condition & Quality

Sharply focused image with full page visible and legible text.

Here's a Treat!

Twelve big full-color issues



A new magazine each month

WALT DISNEY'S COMICS AND STORIES \$1.00 ONE YEAR POSTPAID
\$2 for two years postpaid

Refreshing as a double-deck ice-cream cone! Enjoy the funny, exciting, colorful adventures of Mickey, Donald, Goofy, and all the other Disney folks. *Subscribe now!*

CLEAN — INSTRUCTIVE — ENTERTAINING

Mail to: **K. K. PUBLICATIONS, Inc.**
DEPT. 5 POUGHKEEPSIE, NEW YORK

Gentlemen:
Enclosed find \$_____ for which please enter the following subscription to **Walt Disney's Comics and Stories** for _____ monthly issues beginning with _____ issue.

Name _____
Street and Number _____
City or Town _____ State _____
Donor's Name _____
Address _____

DONALD MITZ
W. HAMBURG PA
4 44 169177 AC

Scene & Composition

- Large subscription advertisement headed “**Here’s a Treat!**” showcasing Disney characters above the masthead.
- Promotional text offers twelve full-color issues for one dollar.
- Subscription form occupies the lower half of the page.

Physical Condition Findings

- Extensive soiling and discoloration across the entire page.
- Lower-left corner shows significant paper loss and tearing.
- Edge wear along both side margins.
- Multiple small creases through the page.

Color & Printing Quality

- Reds and blacks remain readable but muted.
- Cream background heavily toned from age.

Paper Condition

- Uniform tan oxidation.
- No moisture rippling detected.

Overall Impression

Heavily worn back cover with substantial corner loss but intact content.

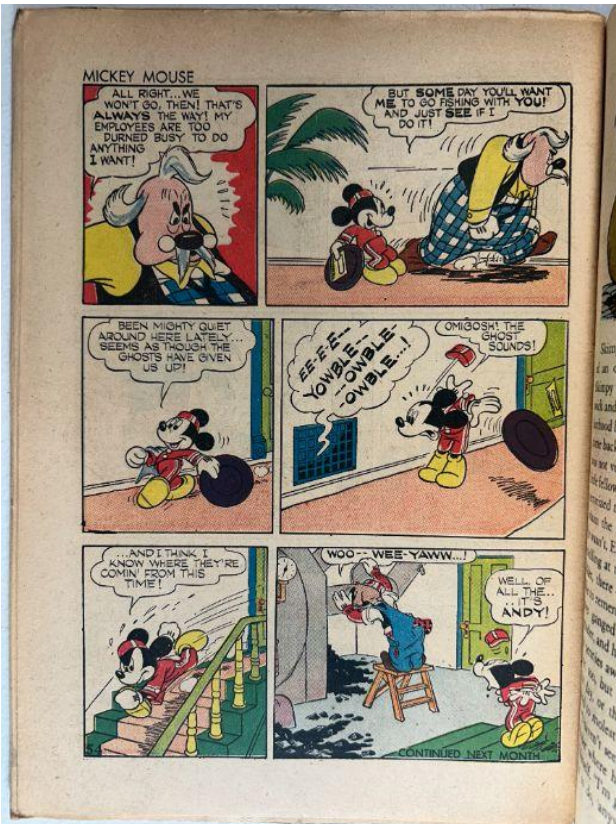
Interior Pages — Observations (IMG_1294, 1295, 1296, 1297, 1299)

Photo Condition & Quality

Interior images are clear and well lit, showing full panels, margins, and gutters.

Page Color

tan to medium brown



CONTENTS

COMICS

- Donald Duck 1, 23, 31, 38, 63
- Mickey Mouse 11, 18, 27
- Little Hiawatha 13, 20, 35
- Bellhop Detective 43

STORIES

- The Twins See the Circus 15
- Trombone Trouble 24
- Toni's Gift 55

FEATURES

- Crossword Puzzle 26
- Contest 42
- Minnie Movie 59
- Hollywood Chatter 60
- Primer Puzzle 62

ANSWER TO LAST MONTH'S PUZZLE

Sixty-four

Interior Pages Findings

Artwork & Story Content

- Mickey Mouse sequences including domestic comedy and chase scenes.
- Donald Duck story pages involving slapstick situations.
- Feature stories include *Little Hiawatha* (Silly Symphony) and *Bellhop Detective*.
- Puzzle, contest, and prose features present per contents page.

All pages appear present with no missing story pages or clipped coupons.

Color & Printing Quality

- Primary colors remain visible but subdued by age.
- Pastels show notable fading.
- Halftone dot patterns consistent with Dell printing.
- Line art remains sharp and readable.

Paper Condition

- Moderate to heavy oxidation throughout.
- Margin foxing common.
- Small edge nicks and corner creases.
- Natural waviness; no moisture damage noted.

Structural Notes

- Interior wraps remain attached to staples.
- Mild stress visible near the lower staple through interior pages.
- Paper remains flexible.

Overall Impression

Complete interior with average Golden Age wear and stable structure.

Centerfold — Observations (IMG_1298)

Photo Condition & Quality

Clear two-page image with central gutter and staples fully visible.



Physical Findings

- Centerfold firmly attached at both staples.
- Minor tearing at the lower staple area.
- Even oxidation, darker at gutter fold.
- Light wrinkles present.

Overall Impression

Structurally intact centerfold with expected staple-area wear.

Spine — Observations (IMG_1300)

Photo Condition & Quality

Clear side-profile view revealing spine curvature and extensive damage.



Structural Findings

- Severe paper loss along the spine length.
- Large splits and open holes at staple locations.
- Pronounced spine roll.
- Cover stock visibly fragmented in multiple areas.

Surface Condition

- Heavy abrasion; gloss fully worn away.
- Fibers exposed across most of the spine.

Overall Impression

Severely compromised spine with major structural failure.

Upper Staple — Observations (IMG_1301)

Photo Condition & Quality

Macro image clearly showing staple metal and surrounding paper fibers.



Staple Findings

- Substantial tearing surrounding the staple entry point.
- Moderate oxidation on metal.
- Paper fibers frayed and delaminated.
- Loss of printed surface layer around staple.

Overall Impression

Upper staple remains attached but offers limited structural support.

Lower Staple — Observations (IMG_1302, IMG_1303)

Photo Condition & Quality

One wider view and one close-up image showing cavity condition and paper layers.



Staple Findings

- Large staple cavity with significant missing paper.
- Staple legs partially visible and angled from stress.
- Rust staining present.
- Severe multi-layer paper separation radiating outward.

Overall Impression

Lower staple is critically compromised and largely unsupported by surrounding paper.

Brittleness Test — Observations (IMG_1304)

Photo Condition & Quality

Clear macro image of page corner flex.



Findings

- Page bends smoothly without cracking.
- No chipping or flaking observed.
- Paper dry but still flexible.

Overall Impression

Paper is aged but not brittle.